

COLOCATION

Security with Flexible Colocation Services that You Can Depend on

Alpheus Communications offers a variety of options to customers with needs for space, power, and connectivity. Key features, provided 24 x 7 x 365, include conditioned power, cooling, fire suppression, physical security and hands-on support.

Reliability

Multiple levels of redundancy ensure maximum reliability and availability. Our world-class, Tier 1 network features diverse architecture, our HVAC has redundant capacity, and our conditioned power is backed by

Uninterruptible Power Supplies (“UPS”) and diesel generators.

Superior Service and Customer Economics

Alpheus’ Colocation Services will allow you to:

- Drive down costs by creating efficient network solutions and pricing options;
- Select space options to meet your business needs; and
- Reduce local loop charges.

Flexible Options

Alpheus offers solutions to meet every customer need including:

- Relay racks
- Cabinets

- Private cages
- Private suites
- Flexible power configurations

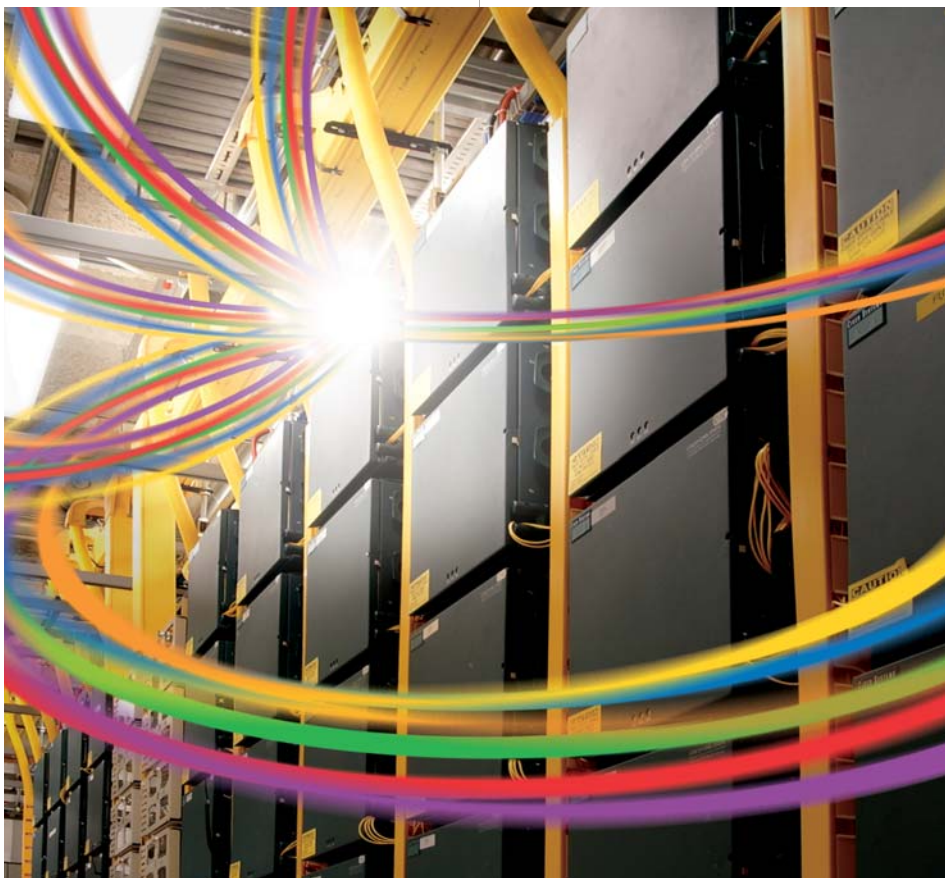
Key Features

- Redundant UPS power with generator backup
- Fully redundant HVAC system
- Fire-threat detection and suppression
- Controlled temperature and humidity
- 24 x 7 x 365 critical monitoring/disaster prevention
- 24 x 7 x 365 security access to all facilities
- Multiple carrier Internet backbones
- Border Gateway Protocol (BGP4) routing

Combine the power of the network and the data center

Alpheus operates a state-of-the-art fiber network along with purpose built data centers. Because of this powerful combination, we offer Internet Access along with flexible cross-connects to a diverse group of established and emerging competitive communications service providers and network intensive enterprises.

To request a service quote or learn more about how Alpheus can fulfill your bandwidth needs, call your sales representative or dial 1-877-ALPHEUS (1-877-257-4387), or visit us on the Web at www.alpheuscommunications.com.



ALPHEUS[®]

A BUSINESS-CLASS BACKBONE FOR TEXAS